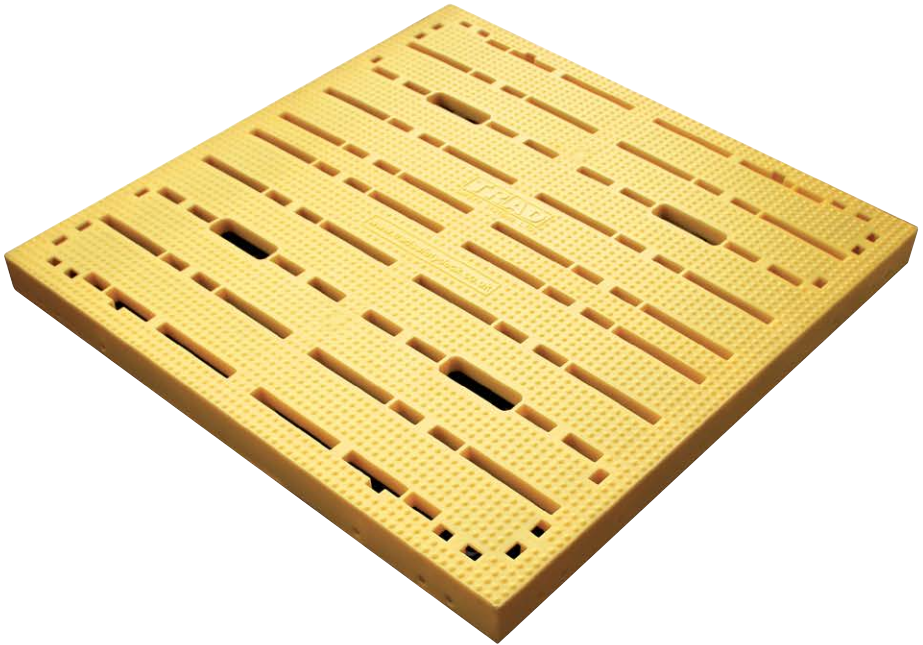




TRAD
SAFETY SYSTEMS
FALL PREVENTION



TRAD SAFETY DECK

USER GUIDE

FOR ALL YOUR FALL
PREVENTION NEEDS

3	Information
3	Safety Information
4	Safety Check List
5	Component Defect Identification
6	Design of Safety Deck
7	Overview
7	Load Testing
7	Check List
8	Inspection
9	Component Data
11	Installation Guidelines

INFORMATION

TRAD Deck Safety System is a light duty fall prevention system that can also be used as a general working platform. It has a safe working load capacity of 2.0kN/m² (202.66kg/m²) Uniformly Distributed Load (UDL).

The system has only 3 basic components and is the market leader in this area.

It is a systemised safety product and as such requires a systemised approach to its erection and dismantle.

SAFETY INFORMATION



Always

- **Always** visually check the system before you start work.
- **Always** inform site agent immediately if you see a potentially dangerous situation.
- **Always** make sure that the TRAD Safety Decking is used by operatives trained by TRAD.



Never

- **Never** remove Fixing Pins.
- **Never** remove Cam Straps.
- **Never** alter Deck in any way.
- **Never** overload decking (max. 2.0kN/m² UDL).

SAFETY CHECK LIST

- Is the access route to the area of erection clear and safe?
- Is the area you are building in clear of debris?
- Is the area you are building in safe to work in? Please ensure any hatches or floor openings are closed or covered when not being used.
- Are there any other trades working above you?
- Is the brick/block work cured properly or the building structure adequate to support the TRAD Deck Safety System?
- Are there 4 walls for lateral support?
- Is the correct equipment on site?
- Are all components in good working order and free from damage?
- Do you and your work team have the correct PPE and are using it?
- Are all the components in their correct position and correctly secured?
- Before dismantling the TRAD Deck Safety System, has it been tampered with?
- Before dismantling is the deck clean and free of debris?
- Never exceed the safe working load of 2.0Kn/m^2 (202.66kg/m^2 UDL).

PPE CHECKLIST

All members of the erection team will observe the requirements for personal protective equipment. Safety helmets, steel toe-capped footwear, hi-visibility tops (Coat/Vest/T Shirts etc.) to be worn at all times, except in agreed designated areas. Eye protection to be worn at all times when dismantling or passing materials up/down to the next level i.e. through the stairwell void trap door.



The following list is intended to offer a reasonable and practicable guide to assist with identification of defective components:

UNIVERSAL BASE/HEAD UNIT

Cracked and/or split plates/casings and supporting corner pads.

PANELS

Cracks and splits are acceptable on the side walls at the pin holes as long as the split has not travelled on to the top of the panel.

If the top surface of the panel is split it is not fit for purpose and should be removed from service.

LEGS

Bowed, split, buckled, kinked along their length. Any cuts or holes within the unit and/or any chemical contaminants, burns, nails etc.

ADJUSTABLE LEGS

As per leg units above plus; composite pin and clip is attached.

CAM STRAPS

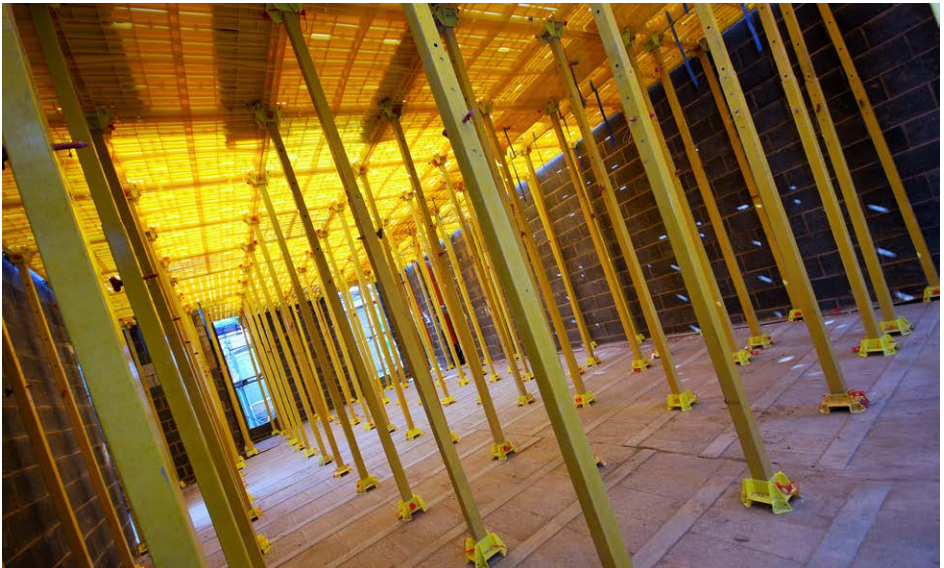
Worn and frayed or part cut through.

PINS

Snapped or cracked.

NOTE: This list is not exhaustive and is intended as a basic guide. If you are in any doubt as to the integrity of any of the system parts or the system as a whole, you should seek advice from a TRAD Safety Systems depot.

CONTACT YOUR LOCAL TRAD DEPOT IF YOU REQUIRE A DESIGN
VISIT WWW.TRADSAFETYSYSTEMS.CO.UK OR CALL 08450 50 70 50



OVERVIEW

TRAD Deck Safety System when installed in accordance to the erection guide is approved and tested as a Class B lightweight working and fall prevention platform.

To achieve the standard its safe working static load has been established at 2.0kN/m² (202.66kg/m² UDL) with a safety factor of 3 for small dynamic loads.

TRAD SAFETY DECKING IS NOT A CRASH DECK.

LOAD TESTING CRITERIA AND RESULTS

TRAD Deck Safety System has been rigorously load tested for the individual structural components and as a complete assembled structure, for the overall resistance against the following:

- Deflection
- Deformation
- Collapse

From the effects of uniformly distributed loads and high impact loads.

TRAD Safety Deck is tested and complies with BS EN 12811-1 part 3 (Class 3) and Roof Fragility test in accordance with ACR(M) 001: 2005 to Class B. These tests were carried out by independent specialist consultants.

Full copies of the tests are available upon request.

CHECK LIST

- Check no legs have been removed
- Check no panels have been removed
- Check Deck has not been interfered with in anyway
- Check all pins are still located in Deck and Legs
- Check Legs are still vertical – (Allowance of 6 inches on 2 Planes)
- Check all Cam Straps are still in place (2 Per Panel)
- Check all components for damage before and during erection and after any heavy impact or repeated impact
- Check the Deck is complete and stable
- Check Adjustable Leg Pins and Clip (Adjustable Legs only)

The system is not indestructible and will fail if abuse and misuse goes unreported. Zero accidents are everyone's goal, but to achieve it we need to work together.

Upon completion of erection of the TRAD Deck Safety System it is essential that the following procedures are carried out:

- On dismantle and before installation all components must be visually inspected for defects or damage. Any components found to be defective or damaged should be quarantined on site for removal at the earliest convenience
- The structure is fully inspected and handed over to the client
- Daily visual inspection should be carried out before use
- The structure is inspected every 7 days after the date of erection as recommended
- The structure is fully inspected after adverse conditions, such as over loading, impact, bad weather and unsafe working practices
- The structure is fully inspected before dismantle

The inspections should include identification of damaged and defective parts, interference with the structure by others, over loading, unprotected edges, un-stability of the whole or part of the system, undermining of the structural legs.

**Please Check with TRAD Safety Systems
in the event of uncertainty**

**www.tradsafetysystems.co.uk
0845 50 70 50**

3 panel sizes

Code	Size	Weight (kg)
080305	1.0x1.0m	9.16kg



Code	Size	Weight (kg)
080310	1.0x0.75m	7.98kg



Code	Size	Weight (kg)
080315	1.0x0.5m	5.32kg



Fixed & Adjustable Leg Units

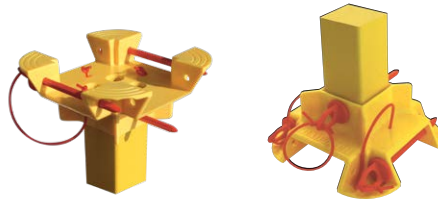
Fixed 1-2m/Adjustable 2-3m

Code	Height	Weight (kg)
080024	1.455m leg	1.20
080025	1.955m leg	2.00
080027	1.7m leg	1.80
080160	1.5m composite leg	1.60
080162	2.0m composite leg	2.70



Universal Base/Head Unit

Code	Weight (kg)
080200	0.5kg



CAM Strap

Code	Weight (kg)
080140	<1kg





TRAD SAFETY DECK

INSTALLATION GUIDELINES

After completing your Risk Assessment and Method Statement (RAMS) and your material has been safely loaded out on to your work area as per your RAMS follow the instructions below:

STAGE 1

Load out the room.



STAGE 2

Pin and secure the heads and footplates to all the leg units. Stand the leg units up against the wall leaving enough space to erect the system.



STAGE 3

Starting in one corner of the room, stand up 2 legs and angle them to the wall so that they stand up independently.

STAGE 4

Lift the full panel into the head of the leg units, making sure you have 2 legs in reaching distance, then put the 2 other legs under the panel to support the deck. You will now have a square.

NOTE: You can angle the 2 legs towards the wall to keep the system supported.



STAGE 5

Now take another panel and lift one end into the heads of the first panel and put the next two legs under the second panel to support it. Continue this procedure of erection in one direction until you come to the end of the room.

NOTE: Use intermediate panels if the standard panels will not give an exact fit.



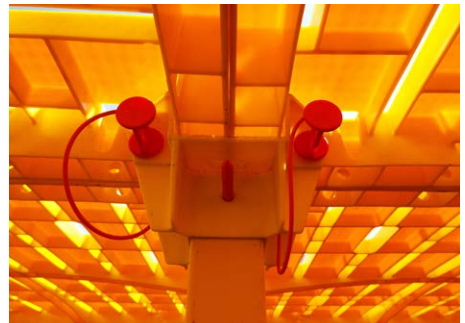
STAGE 6

Erect the second row of panels in the same direction as the first row, joined to the first row, until you come to the end of the room. Repeat this process until the room is fully decked out and laterally supported by all 4 walls, as the image shows.



STAGE 7

Now fix the safety pins through the head and the panels to secure the leg. This makes the system a complete unit.



STAGE 8

It is recommended that the room is protected by using full and intermediate panels. If this is not possible, any remaining gap should be covered by using an appropriate sized panel. This panel should be laid onto the deck, overlapping the gap. Additional legs should be placed under the lapped panel and the leg packed up with a suitable packer to gain the additional height.



STAGE 9

These lapped panels should be strapped down using the cam straps provided. These are placed at the back of the panel furthest away from where it laps the gap. Ensure that when the straps are tightened they pull the deck into the walls leaving the system rigid and free from movement.



NOTE: A minimum of 2 cam straps should be used to tie down every overlapping panel.

STAGE 10 - DISMANTLING

Before dismantling; ensure the deck is clean, free of all materials or debris and complete i.e. butted to four walls. If not, it must be re-secured before any dismantling takes place. Once this is established, commence the dismantling of the system in the reverse order of the erection.

Ensure that each row is dismantled one at a time and that the cam straps are only release on the row, which you are stripping.

Start by removing the cam straps on the first row and then by taking each panel down one at a time.

Repeat this process until the last row. When on the last row ensure 2 operatives are available as once the cam straps are taken off the system will not be secure. Take the system down one panel at a time as the second operative holds the system in place.

STAGE 11 - STACKING

When preparing materials for transportation either around site or to return to TRAD, please stack the panels in bundles of 25 high on the wooden pallets provided and tie them with the cam straps provided as per image if you have no banding materials on site.



Place the legs neatly in the decking leg pallet provided in stacks of 56 as per image.



2m to 3m adjustable leg installation process needs the following additional measures.

1. Recommended that 3 operatives carryout install depending on build size.
2. Adjust leg to required height and insert composite pin with clip.
3. Place 4 legs against wall.
4. Place low level platform e.g. podium type so that it is in position under the panel when fixing (platform determined by height of leg). Must be used by a trained and competent person.
5. Operative 1 on the platform, operative 2 passing equipment and operative 3 holding system in position.
6. Continue to build short run of longest L shape.
7. Pin the back legs as you build. Operative 3 should continue to hold the system in place.
8. Operative 1 & 2 continue to build the system pinning as you go.
9. Final checks as any other build. However, composite pins must be in all adjusted legs and clips deployed.
10. Reverse process to dismantle. Before dismantling; ensure the deck is clean, free of all materials or debris and complete i.e. butted to four walls. Operative 3 to hold system in-place whilst cam straps are removed from final row until system is fully dismantled. Do not remove composite pins from legs until it has been removed from the system.

CONTACT US:

Manchester Depot

TRAD Safety Systems Ltd
Unit 3, Gorton Crescent
Windmill Industrial Estate
Denton
Manchester
M34 3RB

Tel: 0161 320 4888
Fax: 0161 320 4488

Leeds Depot

TRAD Safety Systems Ltd
TRAD House, Unit 1B
16 Cross Green Way
Cross Green Industrial
Estate Leeds
LS9 0SE

Tel: 0113 380 7860
Fax: 0113 380 7861

Glasgow Depot

TRAD Safety Systems Ltd
Unit 3, 16 Baronald Street
Rutherglen
Glasgow
G73 1AH

Tel: 0141 647 8999
Fax: 0141 647 8666

Birmingham Depot

TRAD Safety Systems Ltd
TRAD House
Brickhouse Lane
West Bromwich
West Midlands
B70 0DY

Tel: 0121 270 1477
Fax: 0121 270 1488

London Depot

TRAD Safety Systems Ltd
Renwick Road
Barking,
Essex
IG11 0SB

Tel: 0208 517 5189
Fax: 0208 709 0889

Bristol Depot

TRAD Safety Systems Ltd
Unit C3, Greensplott Road
Chitting Industrial Estate,
Avonmouth, Bristol
BS11 0YB

Tel: 0117 938 6980
Fax: 0117 938 6981



08450 50 70 50 / safetysystems@trad.co.uk